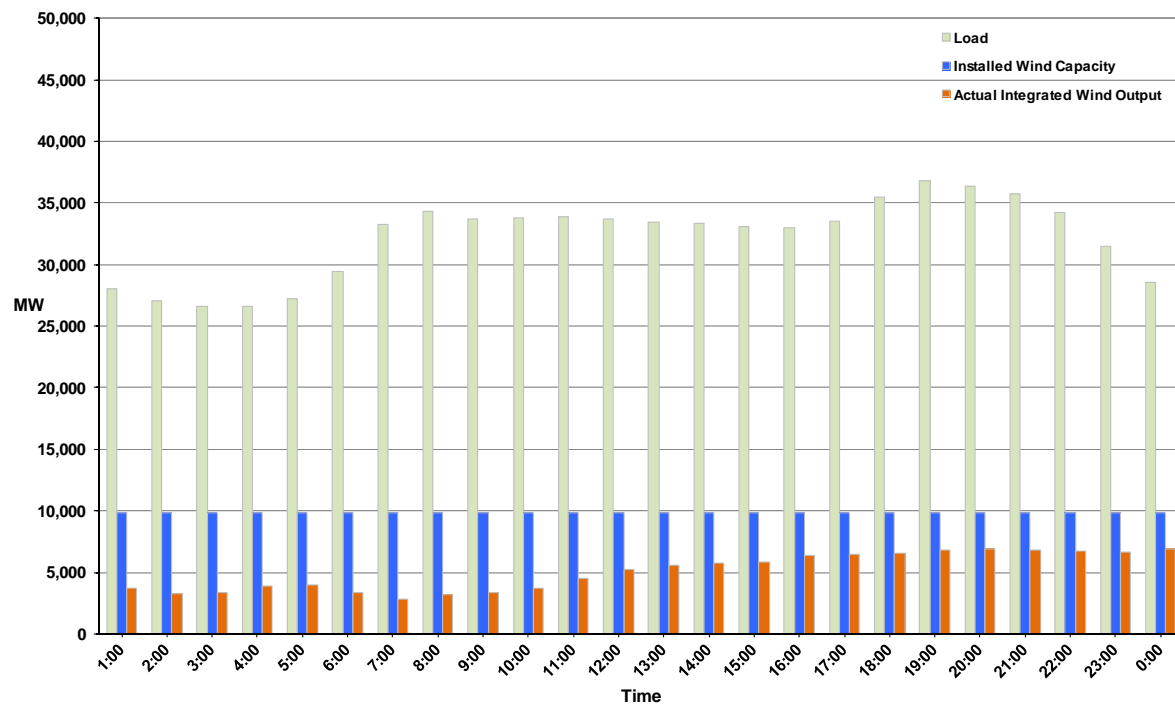




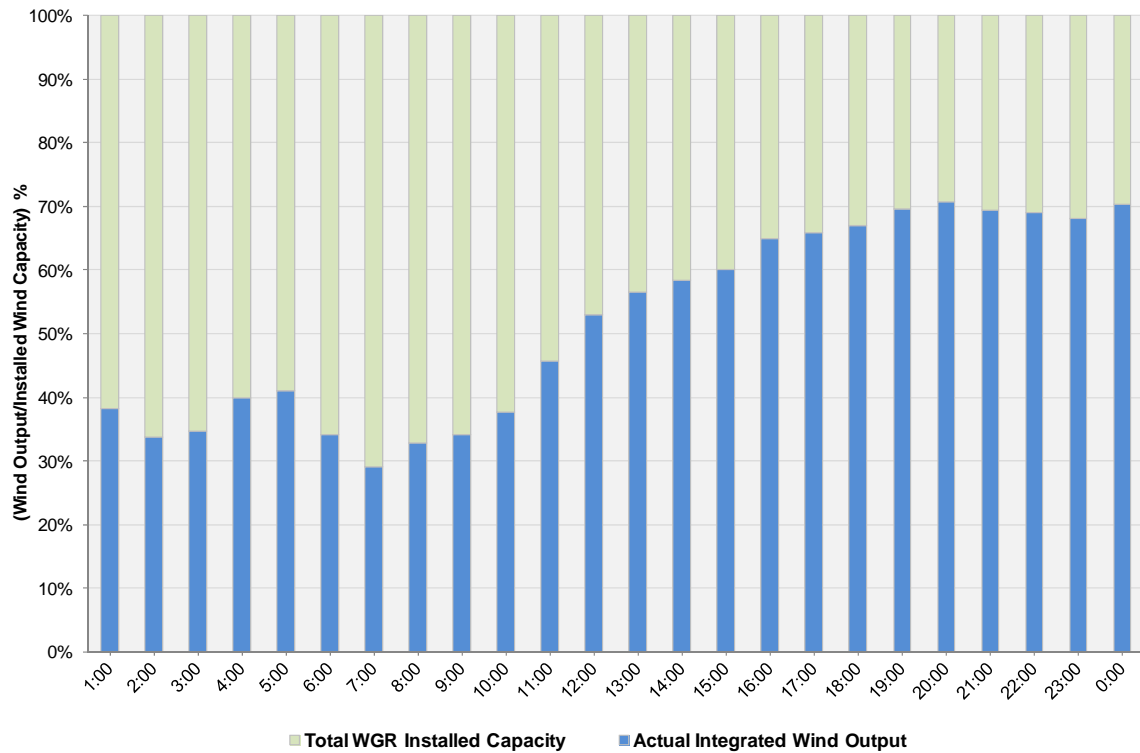
## ERCOT Grid Operations Wind Integration Report: 12/13/11

|                      |                  |
|----------------------|------------------|
| Peak Load            | <b>36,767 MW</b> |
| Load Peak Hour       | <b>19</b>        |
| Wind over Peak       | <b>6,814 MW</b>  |
| Wind Record 10/07/11 | <b>7,400 MW</b>  |
| Max Wind Value       | <b>7,130 MW</b>  |
| Wind Peak Time       | <b>19:25</b>     |
| Wind Integration %   | <b>19.60%</b>    |

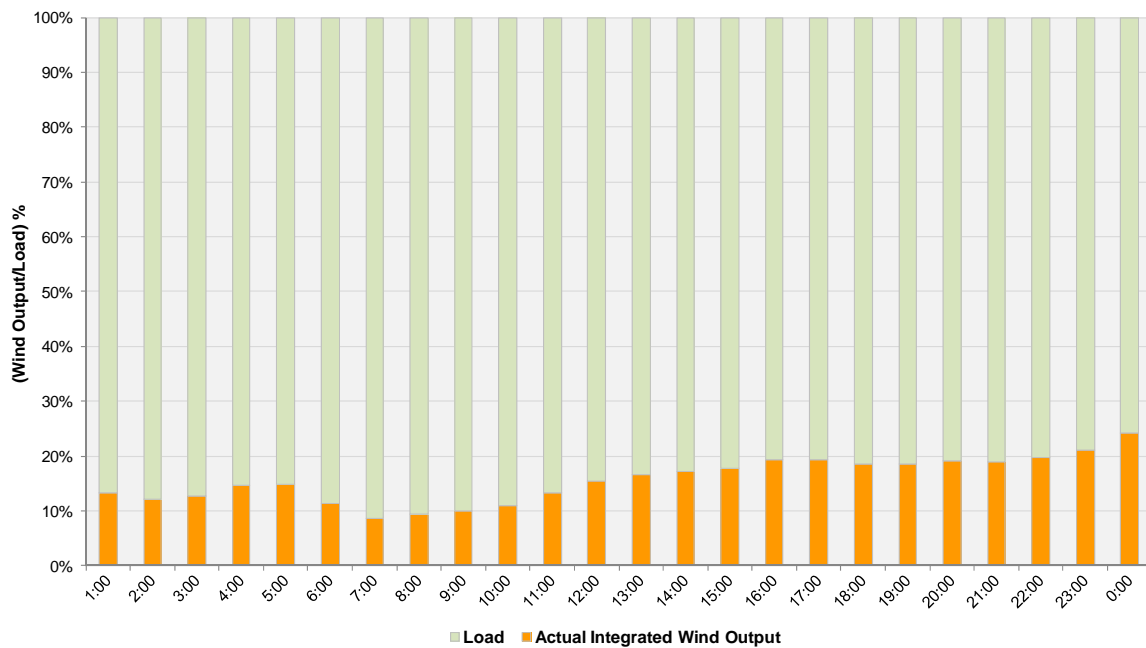
**Hourly Average Actual Load vs. Actual Wind Output  
12-13-2011**



**Actual Wind Output as a Percentage of the Total Installed Wind Capacity**  
**12-13-2011**



**Actual Wind Output as a Percentage of the ERCOT Load**  
**12-13-2011**



ERCOT Load vs. Actual Wind Output 12/6/2011 - 12/13/2011

